

Multi-Station Print

Highlight Feature

- > It allows you to print from any convenient MFP.
- > It allows you to change the print settings and print again.
- > It helps you print only what you ultimately need thus reduce print waste.
- > It provides security without making document left in the output bin.
- > It helps you reduce server installation and maintenance costs.



Your challenge

There is a concern about printing of high priority jobs and critical imaging tasks at peak times in a busy office environment. There is another concern about the necessity of investing in building a system.

Our solution

The Toshiba e- BRIDGE Next MFP has the “Multi Station Print” feature that allows printing from any convenient MFP. No special server is required.

This feature allows printing from up to 50 MFPs(*) at different locations even on different floors in the same network.

Users can be authenticated to print documents to an unoccupied device securely just by holding the card over the reader.

(*) 10 MFPs per group and up to 5 groups can be coordinated, resulting in a total of 50 MFPs.

MULTI-STATION PRINT

Your benefits

The Multi-Station Print feature is a server-less printing solution that allows printing from any of up to 50 convenient MFPs^(*). There is no need to wait until the designated MFP is ready.

This feature in collaboration with the user authentication does not enable automatic printing. Instead, it enables printing from any available printer when you hold the card over the reader. It helps you change the print settings on the control panel before printing, thus reduce print waste. Concurrently, it provides security without making documents left in the output bin. Re-printing on the control panel is available without sending a job again.

No special server is required for this useful feature. Furthermore, easy MFP installation is ensured as information on users and address book in one MFP can be easily cloned to other ones.

Multiple MFPs can be efficiently shared in the office, to optimize management and operation.

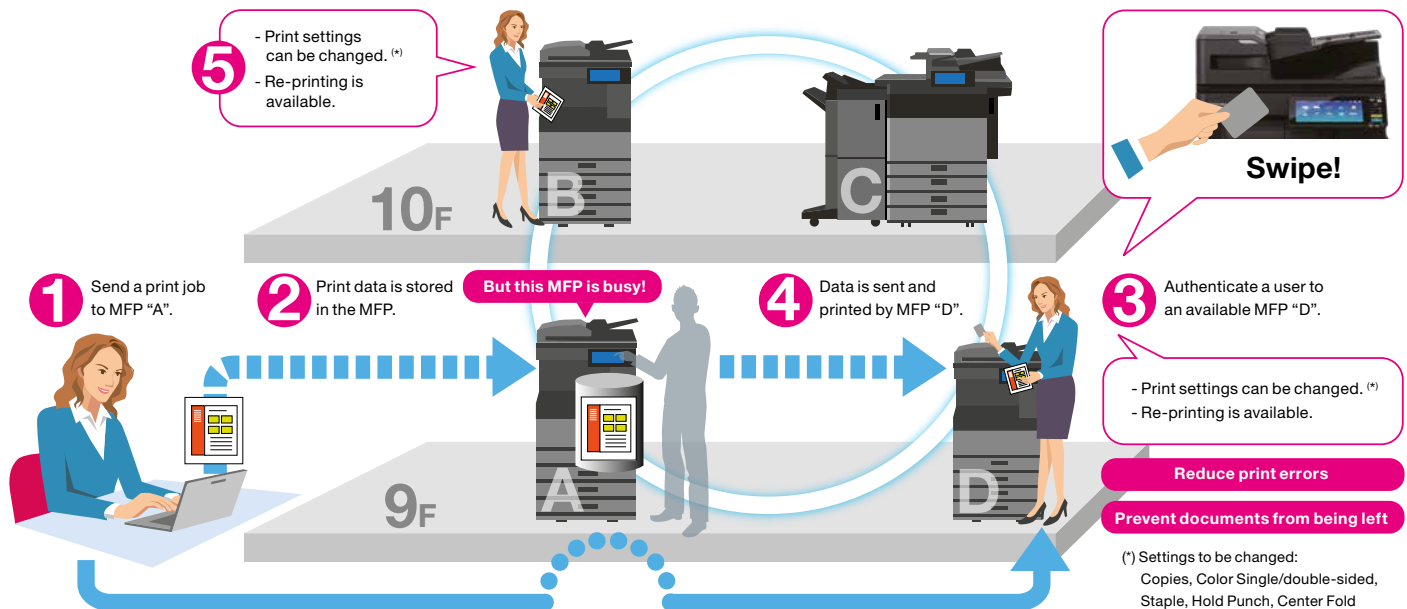
Where to use

The Multi Station Print feature is an ideal solution for all departments.

Especially, a perfect example would be where a lot of users share multiple MFPs.

- > Education
 - A lot of users efficiently share MFPs.
- > Government
 - Security is provided for documents without making them left out.
- > General office
 - Multiple MFPs are efficiently operated with an equally high operating ratio.
 - Reductions in printing and paper costs along with print errors are achieved.
 - Installation cost is minimized by a server-less solution.

The Multi Station Print feature facilitates the effective use of MFPs to improve operational efficiency.



For more information and a complete list of MFPs with this feature please contact us:

Toshiba TEC Singapore Pte Ltd

2 Ang Mo Kio Street 62
Singapore 569138
Tel : (65) 6481 9488
Fax : (65) 6481 2385

Distributed by

Technical data is subject to change without prior notice. All company and/or product names are trademarks and/or registered trademarks of their respective manufacturers in their markets and/or countries. All rights reserved. We are constantly making efforts to deliver the latest status of data to our partners. Specifications for some models may change in the time between the production and the release of this documentation. Productivity and paper specifications are related to paper size of A4 and a paper weight of 80 g/m² if not otherwise mentioned.

Copyright ©2018 TOSHIBA TEC.